

## What does a Pediatric Resource Manager do?

We help children and youth with brain injuries and their families to find success in their schools and communities.

Individualized client and family assistance is designed to find and manage resources that will meet the needs of children and youth while enhancing the caregiving capabilities of families.

Call us to discuss your child's unique needs!

Washington TBI Resource Center:  
Toll Free: 877-824-1766



Discovering  
the road of recovery..

# BIAWA

## The Washington TBI Resource Center at BIAWA

Toll Free: 877-824-1766

### BIAWA

Toll Free: 877-982-4292

Local: 206-467-4800

Fax: 206-467-4808

Mailing Address:

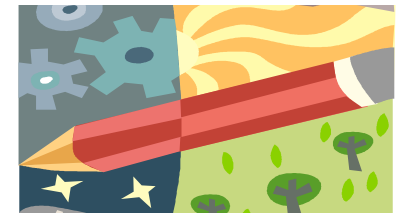
PO Box 3044  
Seattle, WA 98114

[www.biawa.org](http://www.biawa.org)  
[www.facebook.com/  
braininjurywa](https://www.facebook.com/braininjurywa)

## Pediatric Brain Injury Resource Management

a free service of the  
BIAWA

## Supporting School and Community Integration



Working together for a new tomorrow...

## Who is Eligible?

Any survivor of Brain Injury between the ages of 3 and 18, or in a secondary school program.

Exceptions may be considered based on caseload.

### In-Person Pediatric Resource Management Available in Colored Regions



### For More Information Contact

**The Washington TBI  
Resource Center**

Toll Free: 877-824-1766

[admin@biawa.org](mailto:admin@biawa.org)

## Pediatric Resource Management Services

Accessing countless resources to help pediatric with Brain Injury attain the highest quality of life. Such as:

- Providing basic Brain Injury information
- Assisting with planning action steps
- Monitoring progress
- Attending medical appointments
- Obtaining medical records
- Applying for governmental assistance, seeking financial aid/ low cost services
- Finding treatment programs, home health/medical care
- Referring to legal assistance
- Overcoming transportation barriers
- Helping families develop advocacy skills, linking to outside advocacy agencies
- Supporting coordination of services across systems

## Coordinating a Support Team

Connecting the family team, school academic team and medical team to create a safety net for all students who sustain a brain injury.

### Continued Medical Care

- Coordinating consultation of medical team with school and family teams
- Following follow-up care and assessments

### School Re-Entry

- Educating family on school processes
- Attending school meetings
- Providing Brain Injury information for school staff
- Assisting with a 504 Accommodation Plan

### School Success

- Special Education application
- Assisting with the IEP process
- Recommending evaluators
- Seeking behavioral analysis
- Finding specialty schools and vocational training programs